

Gas Can Rack Instructions

Mounting on Open Trailers:

1. Drill 3/8 mounting holes directly over an upright support.
2. Using the (4) slotted head bolts attach the Gas Can Rack to the trailer.
3. If the sides of your trailer aren't strong enough use two extensions & support off the floor. (Figure 1)

Mounting to Enclosed Trailers:

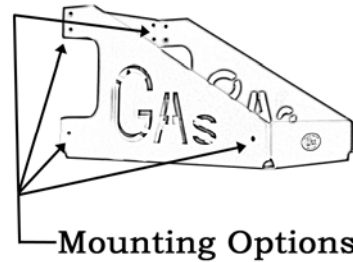
1. Locate the holes on the side of the rack that you wish to secure to the wall.
2. Using the screws (Included), screw directly through these holes into the wall of the trailer.

Mounting to Utility Vehicles:

1. Using the (4) slotted head bolts attach (2) Bed Rail Mounting Brackets (Part# EE082) to the Gas Can Rack.
2. Attach the Bed Rail Brackets to the Bed Rail.

Securing Pin & Lock to Gas Can Rack

1. To Secure the Pin take the lanyard with the open loop, and the closed loop (Figure 1).
 - a. Slide the Closed loop through the pin head, pull the open loop side through the closed loop hole.
 - b. Snap the Open loop to the gas can rack.
2. To secure the Lock
 - a. Snap the open loop to the gas can rack
 - b. Slide lock through Eyelet



Mounting Options

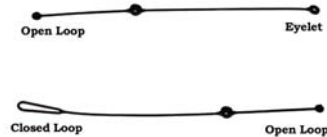
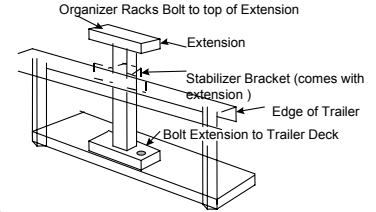


Figure 1



mounting on trailers with round & angle sides. Extensions can be used to ensure stability (Figure 1)



Warning All Green Touch Locks are Keyed alike!!

Required Tools: (2) 9/16" wrenches or (2) 14mm wrenches, Philips head screwdriver, common screwdriver.

Customer Service: (800) 621-6919

www.green-touch.com