

Hedge Trimmer Rack Instructions

Mounting on Open Trailers:

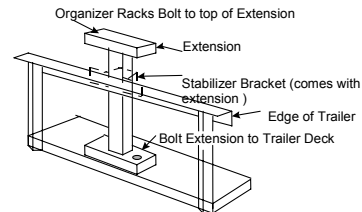
1. Drill 3/8 mounting holes directly over an upright support and bolt the rack on.
2. If the sides of your trailer aren't strong enough use an extension & support off the floor. (Figure 1)

Mounting to Enclosed Trailers:

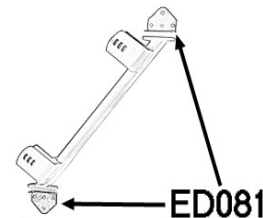
1. This rack should be put on a 45° angle, to make it easier to remove the tools.
2. Drill the self drilling /self tapping screws directly through the plywood & into a steel support on your trailer wall.

Mounting to Utility Vehicles:

1. Attach one of the Bed Rail bracket set (Part #EE082) to the bottom of the Hand Tool Rack.
 - a. Optional 45° Bracket (Part #EF083) will be attached to the base of the rack.
 - b. Attach the Bed Rail Bracket to the Base of the 45° Bracket (Part #EF083).
2. Attach the Bed Rail Bracket to the Bed Rail.



mounting on trailers with round & angle sides.
Extensions can be used to ensure stable
(Figure 1)



Warning All Green Touch Locks are Keyed alike!!

Required Tools: (2) 9/16" wrenches or (2) 14mm wrenches.

Customer Service: (800) 621-6919

www.greentouch.com