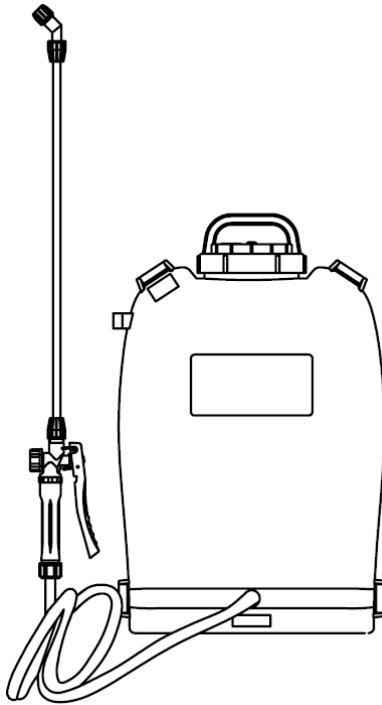


Knapsack Electrical Sprayer

Operation Manual



Caution:

Please read this manual carefully and operate strictly according to the safety standard specified in the manual provided by the supplier. Incorrect use will hurt yourself and others.

CONTENTS

Warning	(2)
Introductory Words	(3)
Introduction	(4)
1. Technical Specification	(5)
2. Main Use	(5)
3. Main Features.....	(6)
4. Main Construction.....	(6)
5. Method of Operating.....	(7)
6. Safety.....	(11)
7. Troubles and Remedies	(13)
8. Technical Maintenance and deposit for a long time.....	(15)
9. List of Attachment and Dissipative Parts.....	(18)
10. Service and Contact	(19)

Warning

- Check if the parts in the package coincide with the packing list.
- The new machine must be charged before using. It is normal for new machine and the machine deposited for a long time charged incompletely. It will be charged fully after releasing repeatedly.
- Don't charge in wet room or with wet hands, or you will get an electric shock.
- Please be sure to charge after using, and charge fully before depositing.
- If the operator has a bad feeling, stop working at once and go to see the doctor immediately.
- Don't use it to spray corrosive liquids, coal oil and other volatile liquid in order not to catch fire or get burn .
- It will harm persons and crop if the chemical liquid is mixed improperly. Please read the introduction of pesticide before using it.
- It is prohibited to put the pesticide into other containers in order not to eat or drink mistakenly.
- In order to avoid incidents incurred by clinging to the pesticide, the operator must wear flanged cap, fog-proof glasses, gauze mask, long gloves, coat guarding against poisons, boots and some other protective clothing.
- Drunk, patients, tired , allergic, women being pregnant , under age of 15 can not use the machine.
- After operating, the operator must wash the whole body with water and soap. In the meantime, the operator must wash eyes with clean water, and changing clothes every day within the period of operating.
- Don't let the deposit or the water cleaned the machine flow into river, lack pond or cloacae, in order not to make pollution.
- The machine should clean completely, be dried and charged fully after using, then laid in a place cool and winding.

Introductory Words

Thank you sincerely for buying our product. Please read the manual carefully, know the character and operating methods in order to use it properly. Please store the manual well to refer it at any time.

If lend it to other people, please attach the manual. If need, please explain it completely to the borrower to avoid the harm due to the improper using.

The product is always improving. Maybe the machine you buy does not coincide with the manual completely. Please kindly take understanding.

The copyright belongs to us. If not allowed, anyone does not copy or cite the manual to achieve an commercial goal.

Introduction

In this manual, there are some warning signs. They imply different safe information. When you see the sign, please be on guard against the harm maybe incurred, read the words carefully below the sign and advise other operators.

The introduction of the warning sign in the manual:

Note: Primary danger.

Warning: Middle danger.

Danger: Senior danger.

The safe signs on the machine (picture below) remind the operator to look out the safe requirement specially when operating the machine.

Please follow the introduction of operating in this manual, including the information you take care specially.

Please note the special signs and they are very important information.



Don't injure yourself or other person



Don't damage the machine



Using correctly in order not to pollute the environment

Every one has the duty to protect the environment and save energy!

While you strictly follow the rule of operating in this manual, you should do set below:

Don't use the virulent pesticide prohibited by the government.

Don't use the machine to harm the environment and public profits.

Please use the machine cautiously where affect the ecological balance.

Don't let the deposit pesticide flow discretionarily in order not to pollute the environment.

1. Technical Specification

Name	Specification		
The name of this product	Electrical Sprayer		
Model	WS-12D	WS-15D	WS-18D
Net Weight(kg)	5.6	6	6.4
Capacity of Chemical Tank(L)	12	15	18
Overall Dimensions(cm)	35×23×51.5	37×24×54.5	38×26×57.5
Max Flow(L/min)	0.8 (single nozzle)		
Working Pressure(MPa)	0.15~0.4		
Battery	DC12V .7AH		
Bump	DC12V. (1~2) A		
Charger	Input 100V~240V, Output 12V, 1.2A		
Lasting Working Time(h)	3~5		

2 Main Uses

Knapsack electrical sprayer are electrical sprayer of new models developed by our company. They have an reasonable design, beautiful outlook, reliable character and are economical products. They have advantages of safety, trustiness, saving energy, good effect of misting, high use ratio of pesticide, broad range of using. It is suitable for use in prevention of plant diseases and pests, such as cotton, wheat, paddy, fruit trees, tea trees and so on.

It can also be used for the prevention of the pests of garden flower, epidemic prevention of hotel, station and other public places and poultry.

3.Main Features

The machine adopt subminiature direct current as the power. Safe and reliable.

The handgrip adopt linkage-control motor switch, easy to operate and safety。

The dissepiment pump of the machine are both-direction, simple

structure,easy maintenance .

The machine has a high pressure, big flow, high spraying effect and good effect in prevention.

The shape of the nozzle of main spraying parts is F, so it has a broad width and high effect..The overall parts of dissepiment pump is made of plastic, so it has the property of low weight and anti-corrosion.

4 Main Construction

This machine mainly has five parts below:

(1) The dissepiment pump is the core part of this machine. It influence the property of the whole machine. The power of the machine is come from DC motor, it drive the membrane running , there is a press –control switch on the dissepiment pump, if press exceed the rating pressure, the pump power will be shut off automatically to protect the moter . The dissepiment pump connect with tank by pump holder.

(2) Battery: the specification is DC12V7AH, fixed in the sprayer. The battery is hold on the battery seat by the belt. The battery are charged by the charging-line combination, there is fuse on the charging-line combination to protect the motor.

(3)Chemical Tank: filled with liquids. The tank is design based on the shape of person back, it is comfortable to put on the back .

(4)Spraying Part: to accomplish the spraying work. There is clique core switch , none- omit ,easy to operate , turn on the power switch and press the handle switch to start working, release the handle ,the pump will shut-down automatically; repress the handle ,it work again.

Attached drawing : HELI-GMB dissepiment pump diagram (1)

Electric circuit diagram (2)

Electric sprayer machine diagram (3)

5 Methods of Operating

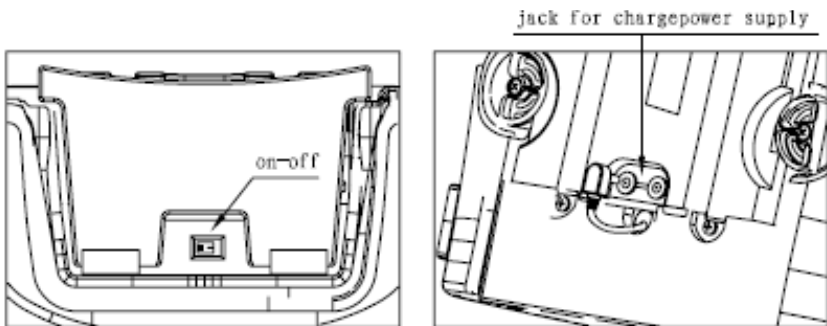
(1) Battery Charge:



- The new machine must be charged before using.
- The deposit machine for a longtime must be charged before using
- Charging with special charger

Please untie the belt and back mat to reveal the battery completely. There are two plugs on the plate, one is connected with electric power, Usually there have been a plug connected with electric pump to supply power to the electric pump, and the other jack is used to connect with the plug of the charger.

When charging, you only insert the output of the charger to the jack and then connect the input with 220V alternating current. The signal light of the charger is red while normal charging. It will change into green when it's full.



The conditions of using charger:

Standard Pressure	AC100V~240V
Input Frequency	50/60Hz
Using Temperature	+10℃~+30℃
Storing Temperature	-10℃~+40℃
Using Place	Only in inside

- The time of charging of new machine or deposit machine for a long time must reach 24 hours.
- Don't let the switch in the place of “—” while charging.



- Please pull out the wire of charger from the jack after ending the charging.
- Don't mistake the wire of the battery, or it will burn the battery and charger. The red wire should be connected with the red end of the battery.
- Don't charge in wet room or with wet hands, or you will get an electric shock.
- Please use the special charger for this machine in order to avoid fire. In addition, it is prohibited to charge other electrical machines with the special charger of this machine or as the power.
- Please pull out the wire of the battery from the socket after ending the charging
- Don't let this machine in the sun, high temperature condition and the things radiating heat, or it will accelerate the old of the battery, make the battery leak liquids, radiate heat, split and fire.
- If you find the charger abnormal, pull out the plug immediately in order to avoid electric shock, radiating heat and making fire.
- Don't adopt generator as the electrical source of charging, or it will destroy the charger.
- Don't pull the wire of charger forcibly.
- Please clean the electrical pickoff of the battery with dry cloth. Bad connection will cut the power supply or result in failing to charging.
- Be sure of safe, please store this machine in place out of the reach of children and infant in order to avoid get an electric shock..



If the battery of this machine need replace, it must be confirmed by company. The disabled battery couldn't be thrown away anywhere. Please send it into the qualified recycle center to deal with it.

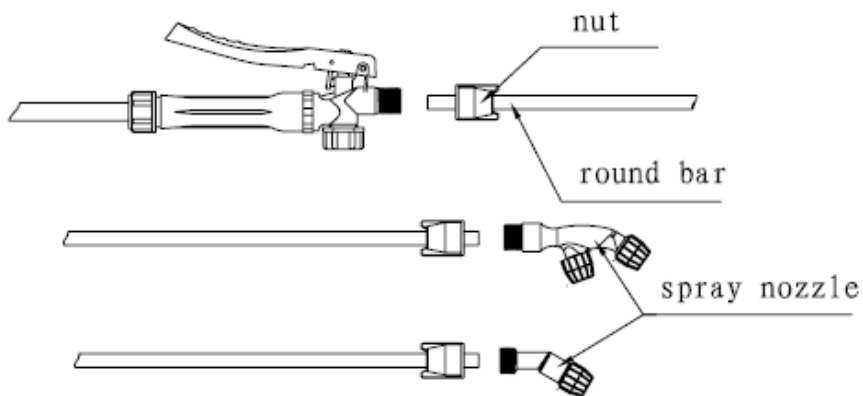
(2) The connection of spraying parts.

a. Fixing the spraying pole on the place shown in the figures.

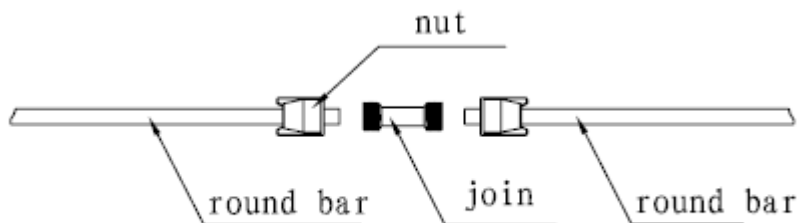
b. Insert the spraying pole into the switch and fasten the screw cap.

Caution: Don't fasten the nut with the pliers, or it maybe harm the nut.

c. Hold the knob assembly with one hand, t adjust the direction of the nozzle by holding the spraying head with the other hand.



d. If you want to spray higher crop, you could connect two spraying poles with the connections to longer the spraying pole.



e. This machine has three different kinds of nozzles. You could use the nozzle according to the different conditions.

Model of Nozzle	Diameter of Nozzle (mm)	Flow (L/min)	Working Pressure (MPa)	The amount of Nozzle
Taper Nozzle	1.5	0.85	0.15~0.35	1
Sector Nozzle	0.7	0.48	0.15~0.4	1
F Nozzle	1.5	1.2	0.15~0.25	2

* The data in the table is trial value of our company not the confirmed value. The amount of spraying mist and working pressure change with the environment.

(3). Add Liquids

Please lay this machine on the aclinic ground when adding liquids.

Please use the filter screen when you adding liquids. The filter screen can protect the liquid plug from jam, for the jam can result in abnormal jet.

Please be slow when adding chemical in order to avoid overbrimming. Once overbrimmed, please wipe it dry and clean with gauze so that the chemical doesn't flow into the battery and electric pump. The chemical liquids can corrupt the electric equipment and short the life of this machine greatly.

It is strictly prohibited to use menstruums easy to curdle when meeting heat. For the heat generated by the working of liquid pump is easy to curdle that menstruum so that the liquid pump doesn't work.

Note:

- Please make sure that the switch of electric power is open before adding the chemical.
- There is a scale on the side of chemical tank, please add chemical liquid according to the quantity of work.
- It is strictly forbidden to spray highly acid liquid, paint and volatile menstruum.

Warning:

- Please follow the prescribe of the manufacturer of chemical menstruum to mix chemical liquid, or it will harm crops and body.
- Be sure to mix the chemical liquids to be well-proportioned in other containers. The filter must be used when filling chemical liquids into the chemical tank.
- Please fasten the chemical cap after finishing filling.

(4) Misting

Warning: Be sure to check the battery after adding water into chemical tank. The liquid pump must avoid idler revolutions in order not to harm it.

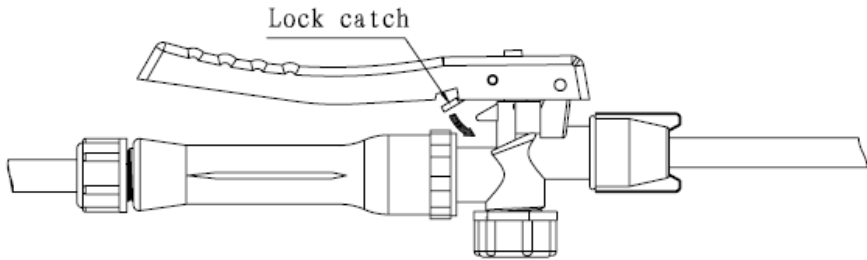
1. Starting

Adjust the switch to the “-”. Grasp the handlebar open the check valve and then spray.

2. Stop

- Adjust the switch to “o”, the liquid pump stop.
- Release the handlebar, stop operation (even no off the power switch)

3.the two-way selection power switch could make the machine ,If you do not operate the intermittent spray, when you don't operate the switch.



When the electric quantity is low, the water flow will be gradually little, need recharge. It doesn't have to consume completely to recharge each time, the battery can be recharged at any moment and come back to the best saturation, this doesn't affect its life.

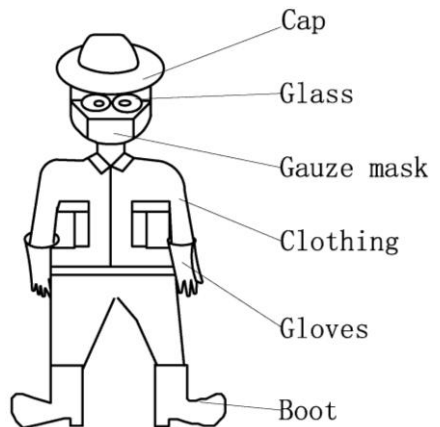
After spraying, discharge remaining liquid out, wash the inside wall of the chemical container with clean water. Then add fit water into the chemical tank, start liquid pump, rotate 2~3 minute. Make the spraying pipe, inside pump and nozzle washed clean, then swill the liquid in the chemical tank. Then, restart liquid pump to discharge the remaining liquid out completely. After that, the power switch is adjusted the place "0"

6.SAFETY

1.Read this manual carefully, Be sure you understand how to operate this machine properly before you use it.

2. Protective Clothing

- Wear flanged cap.
- Wear dirt/fog-proof glasses.
- Wear gauze mask.
- Wear long gloves.
- Wear coat guarding against poisons.
- Wear boots.



3. Following personnel can not use the machine:

- Mental patients.
- Drunk.
- Under age or old person.
- Person with no knowledge of the machine.
- Dog-tired person or patient and others who can not operate the machine normally.
- Person who have just exercised strenuously or slept not enough. Women giving the breast to baby or being pregnant.

4. Recharge

- If the wire, plug is bad, or the socket is lax, don't use, or you will get an electric shock, fire and so on.
- Don't pull the plug with wet hand to avoid electric shock.
- If the plug wasn't inserted into the socket completely, there are also danger such as electric shock, fire.
- Please clear away the dust on the plug. The dust can also make fire.
- Don't lay this machine in the wet or dusty place to avoid electric shock, heat, split and so on.
- Don't charge over set time, or it will make the battery leak, heat split and so on.
- When deposit the machine avoid directly sunlight, hot environment and avoid things that are emitting heat of their own. Otherwise will speed up the aged about the battery, and may cause weeping, emit heat, craze, or strike fire etc
- Don't charge when the temperature of battery is low or in the cold outside, or the battery will leak and short its life.
- Don't throw the battery into the fire or heat it, or it will split the battery.
- If you find the battery leak, color changed and distortion, don't use it any more.

5. Spraying

- It is fine to carry out operation during cool weather with little wind. For example ,in the early morning or in the last afternoon ,this can reduce

the evaporation and drift of chemicals and improve the protection effect.

- Operator should move windward.
- If you mouth or eyes are spattered with chemicals, wash them with clean water and then go to see the doctor.
- If the operator has a headache or dizziness, stop working at once and go to see a doctor in time.
- For the operator's safety, misting/dusting must be carried out strictly according to the instruction of the chemicals and agricultural requirements.
- Sprayer over, according to pesticide manual to clean out any residual spray mixture in chemical tank.
- After spraying always wash your hands and face thoroughly.

7. Trouble Shooting Guide

If spraying abnormally, charging badly and blowout, please refer to the table below

Please contact the dealer of this company to remedy the articles with ※

Abnormal Misting		
Problem	Cause	Remedy
The motor does not work	The power switch is in "0"	Switch to "—"
	The plug is lax	reconnection
	Switch damaged	replace
	Line cut off	Replace or connection
	fuse melt	replace
	The motor is cut out	replace※
	The motor burned to damage	replace※
	The voltage of battery is low	Charge or replace
	high pressure on pipe	Open the handle switch
	pressure switch not effect	replace※

The motor run	No running	The nozzle clogged	cleaning
		no medicine liquid in tank	Filling chemical liquids
		The air valve of chemical tank lid clogged	cleaning
		Pump valve clogged	cleaning
		the filter of absorbing is jammed	cleaning
		Nut on the pressure switch is losing	Tighten nut
		Pump valve is jammed	cleaning※
		pressure spring no effect	replace※
		diaphragm no effect	replace※
	The pressure Does not rise	Pump valve clogged	cleaning※
		The adjusting valve of pressure is jammed	cleaning
		inlet nozzle on the tank lid is jammed	cleaning
		motor is abnormal	replace※
		spout wear	replace※
		pressure switch no effect	replace※
		tube is jammed or shape	Cleaning or tidying up
		pressure nut is loose	Tighten nut
		pressure spring is no effect	replace※
	low voltage	Charge or replace	
Charge abnormally			
Can not charge	battery is abnormal	Replace	
	charger is abnormal	replace	
	connection line is bad	reconnection	
	Line turn off	Replace or repair	

The capacity of the accumulator can not recover	time for charge is not enough	Keep on charging
	Battery is abnormal	replace
	Charger is abnormal	replace
fuse melt		
Motor does not work	pressure switch is no effect	replacet※
	switch is not connect well	replace
	switch at "0" position	Right operation
	Motor runs heavily	Replace motor※

8. Technical Maintenance and Deposit for a long time

1、 daily maintenance

The following maintenance should be done after daily job

- 1) Cleaning the oil and dust on the surface machine
- 2) Clean chemical tank with clean water and dry it.
- 3) Check all the connections whether there is leakage of water or fuel. If there is leakage, remedy procedures are very necessary.
- 4) Check all the screws to see if they are loose or lost. If there is , please screw tightly or replace.
- 5) The battery must be charged before depositing. Charge before each using in case short power.
- 6) The machine after maintenance should be put in dry and ventilating place. It must be far away from fire source and avoid sunlight.

2、 Deposit for a long time

The machine deposit for a long time should maintenance as follows:

- 1) Clean the machine surface carefully。
- 2) Discharge medicine in the tank and pump, clean them with clean water.
- 3) The battery must be charged before storing. If deposit for a long time, it should be charged every two months.
- 4) All the plastic parts must neither exposed to the sunlight nor pressed by heavy matter
- 5) Cover the machine with plastic dustcoat and store in a dry and clean

place.

a) Cleaning

1) Clean chemical container

Call back remaining chemical liquid and wash it.

Fill one liter water into chemical tank and then swing it lightly.

2) Clean the inside liquid pump

After cleaning chemical tank, fill clean water again and start liquid pump to mist to clean the whole pipeline.

3) Clean the filter net

(1). Clean the filter net in the mouth of chemical tank.

(2). Clean the filter net of suction inside the chemical tank.

There is a filter net of suction at the bottom of chemical tank to avoid the dust coming by the filter net of the mouth of chemical tank to be sucked into liquid pump. The filter of suction is jammed to spray abnormally and infect the liquid pump greatly. So please take out the filter of suction to clean carefully after operating. Fix it cautiously after cleaning.

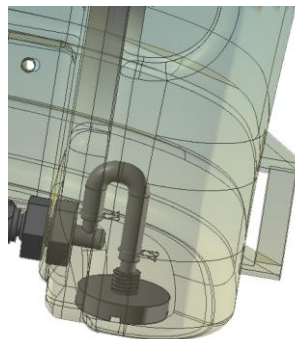


The remaining chemical liquids and the water washed the machine don't flow into rivers, lakes, ponds or cloacae in order to avoid pollution. Please deal with it innocuously.

b).Maintenance on the battery

In the course of operation, it should be master the frequency and time of charge according to actual condition and referring to usual spray frequency and time. It's best to charge when the battery discharge the 60%--70%, the average charging time is about 8 hours. Long time to charge may cause the battery to loose water, hot and reduce the life.

When we stock the battery, it must not be without any power. Without power means after we use the battery, we couldn't recharge it on time. If we stock the battery without power, it will easily get vitriolization, lead sulfate crystal, which jammed the road of the electric ions, and make the power not enough, also the capacity of the battery will be lower. If the battery without



power too long time, the battery will be harmed more seriously. Therefore, if we don't use the battery for time being, we should charge it once each month, which then we can keep the battery in good situation.



- It is normal that the charger is little hot while charging.
- Overcharge or overdischarge will cut the life of battery remarkably.
- Don't joint the battery directly, or it will harm the safe character of the battery.
- Don't disassemble and assemble the battery. The battery has the protection equipment, if you alter it, it will make the battery heat and split.
- Don't connect the anode and cathode of the battery with metallic material. Don't transport battery with metallic material, or it will make the battery leak, heat and split.
- Don't charge in wet room or with wet hands, or you will get an electric shock.
- Please use the special charger for this machine in order to avoid fire. In addition, it is prohibited to charge other electrical machines with the special charger of this machine or as the power.
- Don't let this machine in the sun, high temperature condition and the things radiating heat, or it will accelerate the old of the battery, make the battery leak liquids, radiate heat, split and fire.
- Don't adopt generator as the electrical source of charging, or it will destroy the charger.
- The light of the charger will light if you recharge immediately after ending charge, it is normal. But this will result in overcharge and you should avoid the operation.
- If you find the charger abnormal, pull out the plug immediately in order to avoid electric shock, radiating heat and making fire.
- Don't throw the battery into the fire or heat it up, or it will make the battery split and electrolyte splashed.

c). Replace the fuse

In order to protect the wire and electrical machine, this machine is equipped

with fuse. If blowout due to something, please unplug the right and left fixed equipment, take out the assembly of battery, lax the packing belt, remove the battery, open the cap of fuse to replace the damaged fuse with new one. In addition, please find out the cause of blowout and remedy it. After this, you could operate it again.

Some causes of blowout:

The charger doesn't coincide with the battery or has trouble.

The pesticide sticks to the liquid pump.

The wire is short circuit due to the damage.

Incorrect connection.

9. List of Attachment and Easy Wasting Parts

Please check if the goods in the package are complete, and check whether has damage during the transport. Once short or damage, please advise the dealer of the covering product name, model, number.

List of Attachment: :

Product name	Knapsack electrical sprayer			
Model	WS-12D	WS-15D	WS-18D	
Item	Specification		Qty.	Note
Main body			1	
Special charger	GS1212Z		1	
Spray parts	WS16-13-05		1	
Cone spray nozzle ass.	WS16P-13-01A		1	
Fan spray nozzle	WS16P-13-01B		1	
F style spray nozzle	WS-18D-11		1	
Operation manual	SMWS-12D/15D/18D-01		1	
Guaranteed card	WS-18D.12.1-2		1	

You have to take out your credit of service, so please store it well. The parts below need replace according to the conditions while normal maintenance. If the consumer has needs, please buy them separately.
List of easy wasting parts:

Specification	Name	Material
WS-18D.5-3	switch washer	anti- acid and alkali rubber
WS-18D.5-6	pressure cover washer	anti- acid and alkali rubber
WS-18D.11-2	spray nozzle washer	AT-75
WS-18D.5-12	handle washer	anti- acid and alkali rubber
6X30 F10A250V	fuse	
	all kinds of steel clip	stainless steel
	all kinds “o” washer	anti- acid and alkali rubber

10.Service and Contact

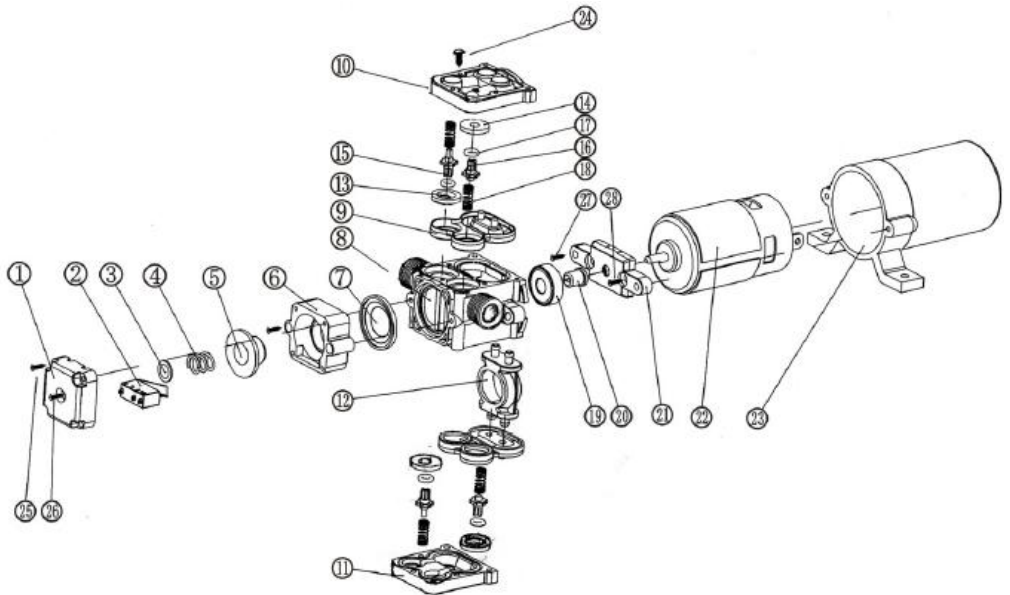
Warranty regulation:

If this product doesn't work during the stipulated period, identified by our company that the cause belong to manufacturing quality. Our company bear the service. If the transport, incorrect or operating, maintenance aren't according to the manual to damage the machine. We don't bear that. No invoice of the number of the machine in the service card doesn't coincide with the practicality machine. We aren't in charge of these either.

Contact :

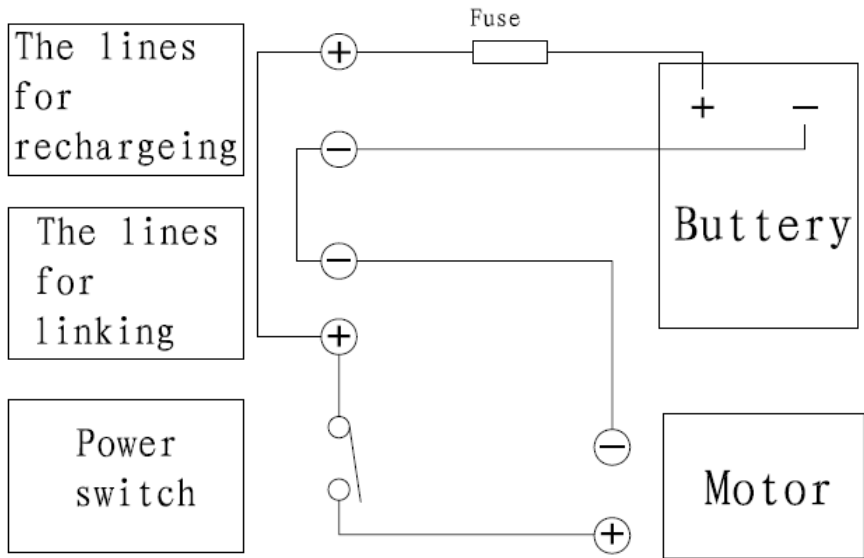
If you deal with this machine according to the manual, this machine can be used normally. Once having troubles, please contact the dealer and they will supply you with best service.

HELI-GMB dissepiment pump diagram (1)

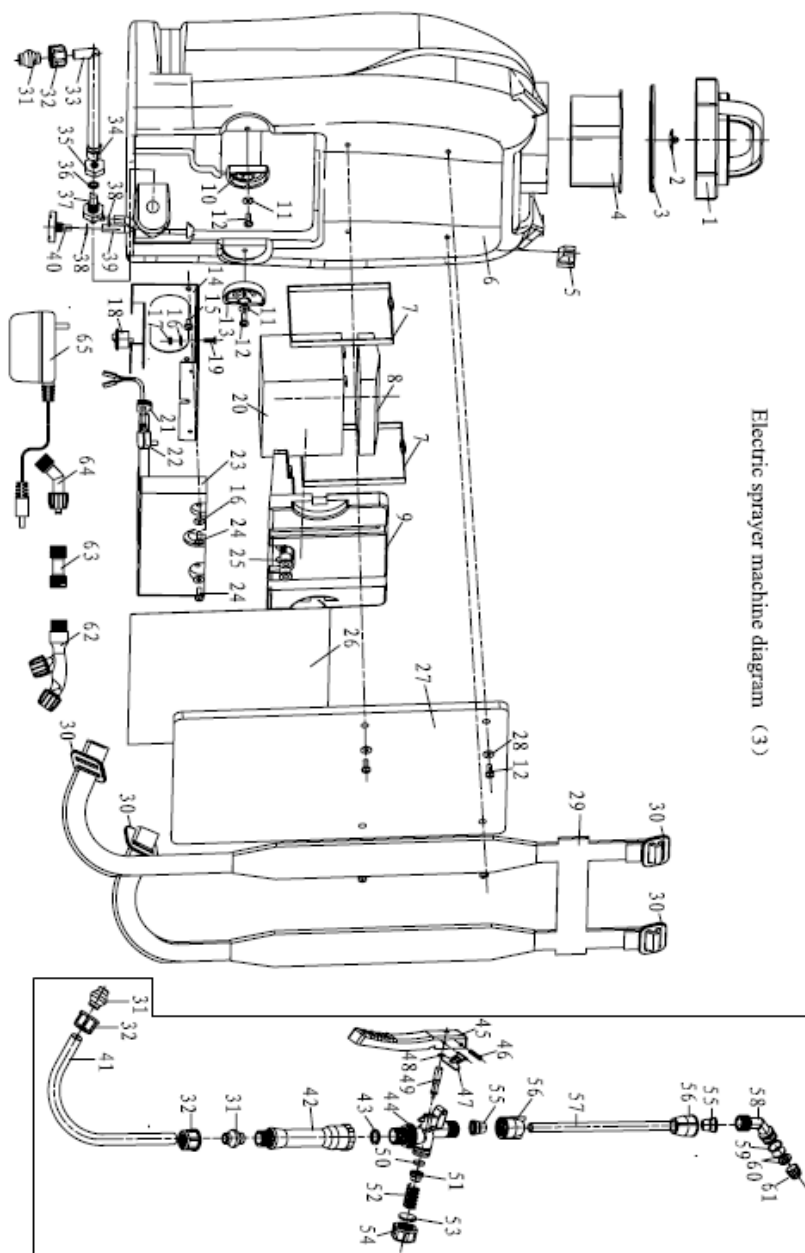


spare parts for pump					
No.	Name	Quantity	No.	Name	Quantity
1	pressure valve lid	1	15	inlet valve filter	2
2	pressure switch	1	16	outlet valve filter	2
3	pressure spring cushion	1	17	valve filter seal washer	4
4	pressure spring	1	18	valve filter spring	4
5	pressure piston	1	19	bearing	1
6	pressure fixity	1	20	slanting shaft sheath	1
7	pressure rubber	1	21	motor holder	1
8	pressure pump body	1	22	motor	1
9	diaphragm	2	23	motor cover body	1
10	diaphragm pump up lid	1	24	screw M3x18	10
11	diaphragm pump down lid	1	25	screw M3x15	4
12	bearing move seat	1	26	screw M3x14	1
13	inlet valve seat	2	27	screw M3x25	2
14	outlet valve seat	2	28	screw M3x8	2

Electric circuit diagram (2)



Electric sprayer machine diagram (3)



Detailed Table

NO.	Part No.	Part Name	Qty.	NO.	Part No.	Part Name	Qty.	NO.	Part No.	Part Name	Qty.
1	WS-18D, 9-1	Container Cap	1	25	WS-18D, 4, 1	The lines for recharging	1	49	WS-18D, 5-2	Pressure shaft	1
2	WSJB-6, 2-2	Air Intake Plug	1	26	WS-18D, 10	Flashing	1	50	WS-18D, 5-4	Switch Felt Washer	1
3	WS-18D, 9-2	Felt Washer	1	27	WS-18D, 6	Belt pad	1	51	WS-18D, 5-4	Washer seat	1
4	WS-18D, 8	Large filter	1	28	GB/T96, 1	Washer φ 6	4	52	WS-18D, 5-5	Spring	1
5	WS-18D-1	Round rod clamp	1	29	WS-18D, 7	Belt	1	53	WS-18D, 5-6	Switch Nut Washer	1
6	WS-18D/15D/18D, 1, 1	Water tank	1	30	WS20-12-05	Fastening buckle	4	54	WS-18D, 5-7	Switch Nut	1
7	WS-18D, 4, 2	The belt for battery	2	31	WS16-13-08-02	Scarf joint	3	55	WS16-13-05-02B	Split Sleeve	2
8	WS-18D, 4-2	Lag	1	32	WS16-13-08-01B	Case nut M18	2	56	WS16-13-05-01	Case nut	2
9	WS-18D, 4-1	Battery seat	1	33	WS-18D-2A	Absorb pipe	1	57	WS16-13-05-03B	Round bar	1
10	WS-18D-4	Left battery holder	1	34		Pipe buckle φ 6 ~ φ 121	58	WS16-13-04B	Nozzle body	1	
11	GB/T795	Washer φ 5	2	35	WS-18DZ-1	Case nut	1	59	WS-18D, 11-2	Felt Washer	1
12	GB/T818	Screw M5 × 12	6	36	WS-18DZ, 1-4	Rubber Washer	1	60	WS16P-13-01-01	Conical Spray Plate	1
13	WS-18D-5	Right battery holder	37	37	WS-18DZ, 1-3	Water pipe	1	61	WS16-13-01-03	Spray Head Nut	1
14	WS-18D, 3-1	Pump seat	1	38	WS-18DZ, 1-2	Snap link	2	62	WS-18D, 11	F Style Spray Head	1
15	GB/T818	Screw M5 × 8	2	39	WS-18DZ, 1-1	Water pipe	1	63	WS16-13-01C-03	Join	1
16	GB/T797, 1	Washer φ 4	6	40	WS-18DZ, 1.1	Little filter	1	64	WS16P-13-01B	Fan Style Spray Head	1
17	GB/T6170	Nut M4	2	41	WS-18D, 3-2	Hose	1	65	GS1212Z	Charger	1
18	KCD3-1111N	Power switch	1	42	WS-18D, 5-13	Switch Handle	1				
19	GB/T819, 1	Screw M4 × 16	2	43	WS-18D, 5-12	Felt Washer	1				
20	HYS1270	Battery	1	44	WS-18D, 5-1	Switch Body	1				
21	WS-18D, 3-3	Lag	1	45	WS-18D, 5-8	Press Plate	1				
22	WS-18D, 3, 1	The lines for linking	1	46	WS-18D, 5-10	Switch Pin	1				
23	WS-18D-8	Pump board	1	47	WS-18D, 5-9	Lock catch	1				
24	GB/T818	Screw M4 × 12	2	48	GB/T3452, 1	O-Ring 4, 4 × 1, 8	1				